

Finding a Primary Care Provider

in Nova Scotia – August 2021

As of August 1, 2021

71,666

Nova Scotians

are on the Need a Family Practice Registry

This represents

7.3%

of the population



Annual Population Estimates, Apr 1, 2021
Statistics Canada

Approximately

2,400 people

found a family doctor or nurse practitioner each month in the past year

Monthly activity

As reported in July 2021

1,939 people

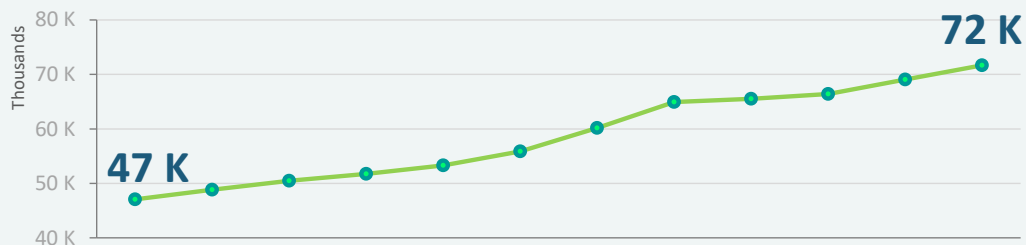
found a family practice

In July 2021

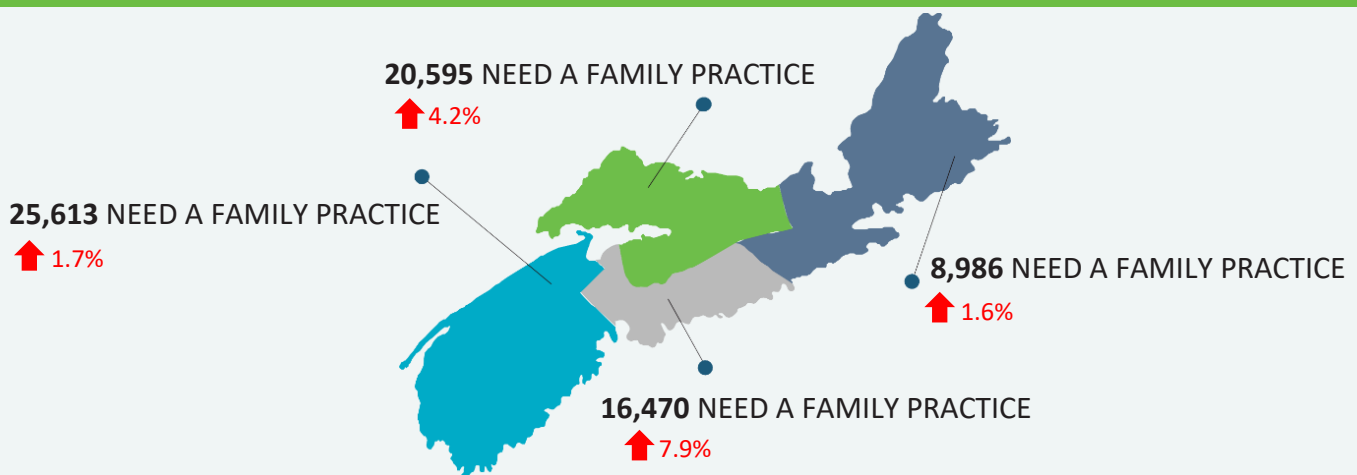
4,236 people

added their names to the registry

Number of people on the Need a Family Practice Registry Sep 2020 – Aug 2021



Total number of Nova Scotians by area and percentage change



Total volumes and percent of the population not yet placed by zone, network and cluster

Zone/Network/Cluster	Total # Not yet placed	Difference vs previous month		Population (2016)	% of Population (2016)
Central	16,470	↑	1,199	423,498	3.9%
Bedford / Sackville	3,837	↑	409	99,581	3.9%
Bedford / Hammonds Plains	1,849	↑	126	40,679	4.5%
Fall River and Area	508	↑	64	15,424	3.3%
Sackville North and Area	792	↑	116	22,325	3.5%
Sackville South	688	↑	103	21,153	3.3%
Dartmouth / Southeastern	3,511	↑	485	116,491	3.0%
Cole Harbour / Eastern Passage	929	↑	134	35,355	2.6%
Dartmouth East	609	↑	107	23,264	2.6%
Dartmouth North	803	↑	145	19,833	4.0%
Dartmouth South	988	↑	132	27,284	3.6%
Preston/Lawrencetown/Lake Echo	182	↓	33	10,755	1.7%
Eastern Shore Musquodoboit	703	↑	44	17,474	4.0%
Eastern Shore / Musquodoboit	703	↑	44	17,474	4.0%
Halifax Peninsula / Chebucto	6,713	↑	283	169,768	4.0%
Armdale / Spryfield / Herring Cove	768	↑	27	25,640	3.0%
Clayton Park	1,253	↑	66	34,194	3.7%
Fairview	786	↑	75	17,104	4.6%
Halifax Chebucto	735	↑	23	18,939	3.9%
Halifax Citadel	1,389	↑	42	22,106	6.3%
Halifax Needham	917	↑	47	19,426	4.7%
Sambro Rural Loop	400	↓	10	12,660	3.2%
Tantallon / Timberlea / SMB	465	↑	13	19,699	2.4%
West Hants	1,706	↓	22	20,184	8.5%
West Hants	1,706	↓	22	20,184	8.5%
Eastern	8,986	↑	144	158,936	5.7%
Antigonish and Guysborough	493	↑	40	26,926	1.8%
Antigonish	453	↑	37	19,301	2.3%
Guysborough / Canso	40	↑	3	5,039	0.8%
Sherbrooke	-		-	2,586	0.0%
Cape Breton County	7,996	↑	121	99,590	8.0%
Dominion / Glace Bay	1,470	↑	6	20,713	7.1%
Florence / Sydney Mines / North Sydney	894	↑	30	19,679	4.5%
New Waterford	1,037	↑	62	9,454	11.0%
Sydney and Area	4,595	↑	23	49,744	9.2%
Inverness / Victoria / Richmond	497	↓	17	32,420	1.5%
Baddeck / Whycomagh	5	↓	2	3,654	0.1%

Zone/Network/Cluster	Total # Not yet placed	Difference vs previous month		Population (2016)	% of Population (2016)
Cheticamp	1	↓	1	3,903	0.0%
Dingwall	1	↑	1	2,567	0.0%
Inverness	48	↑	6	6,932	0.7%
Port Hawkesbury / L'Ardoise / Isle Madame	442	↓	21	15,364	2.9%
Northern	20,595	↑	823	147,500	14.0%
Colchester East Hants	9,846	↑	203	70,658	13.9%
East Hants Corridor	1,261	↑	43	12,674	9.9%
Economy / Glenholme	733	↑	12	5,277	13.9%
Hants North	878	↑	44	6,945	12.6%
South Colchester	801	↑	19	10,792	7.4%
Truro and Area	6,173	↑	85	34,971	17.7%
Cumberland	2,080	↑	74	33,094	6.3%
Amherst	765	↑	9	13,143	5.8%
Cumberland North / North Shore	1,110	↑	16	8,665	12.8%
South Cumberland	79	↑	21	3,864	2.0%
Springhill	126	↑	28	7,422	1.7%
Pictou County	8,669	↑	546	43,748	19.8%
New Glasgow / Westville / Stellarton	6,962	↑	482	33,561	20.7%
Pictou West	1,707	↑	64	10,187	16.8%
Western	25,613	↑	428	193,664	13.2%
Annapolis and Kings	11,730	↑	194	78,793	14.9%
Annapolis Royal	649	↑	38	6,056	10.7%
Berwick	1,810	↑	6	13,764	13.2%
Kentville	2,255	↑	51	23,893	9.4%
Middleton	5,854	↑	48	20,910	28.0%
Wolfville	1,162	↑	51	14,170	8.2%
Queens and Lunenburg	5,932	↑	164	57,933	10.2%
Bridgewater	3,074	↑	49	26,711	11.5%
Chester and Area	682	↓	5	11,778	5.8%
Liverpool	1,515	↑	72	10,351	14.6%
Lunenburg / Mahone Bay	661	↑	48	9,093	7.3%
Yarmouth / Shelburne / Digby	7,951	↑	70	56,938	14.0%
Digby / Clare / Weymouth	2,704	↓	5	18,553	14.6%
Shelburne / Lockeport	1,512	↓	18	13,966	10.8%
Yarmouth	3,735	↑	93	24,419	15.3%
Unknown	2	↑	2	-	0.0%